

A SHINING EXAMPLE OF PRIVILEGE LIVING



ABOUT VR FOUNDATIONS

For over two decades, VR Foundations has been a trusted name in Chennai's real estate landscape, delivering both residential and commercial projects. From plotted developments to large-scale commercial ventures, VR Foundations combines architectural expertise with top-grade materials to create spaces that are both durable and visually impressive. Guided by the motto "A Home for Every Heart," VR Foundations is dedicated to crafting living and working spaces that offer comfort, warmth, and a sense of belonging for all.

VR FOUNDATION COMPLETED PROJECTS



THIRUNINRAVUR



**NEMAM
THIRUMAZHISAI**



THIRUMAZHISAI



POONAMALLEE



POONAMALLEE



POONAMALLEE



KUNDRATHUR



THIRUMAZHISAI

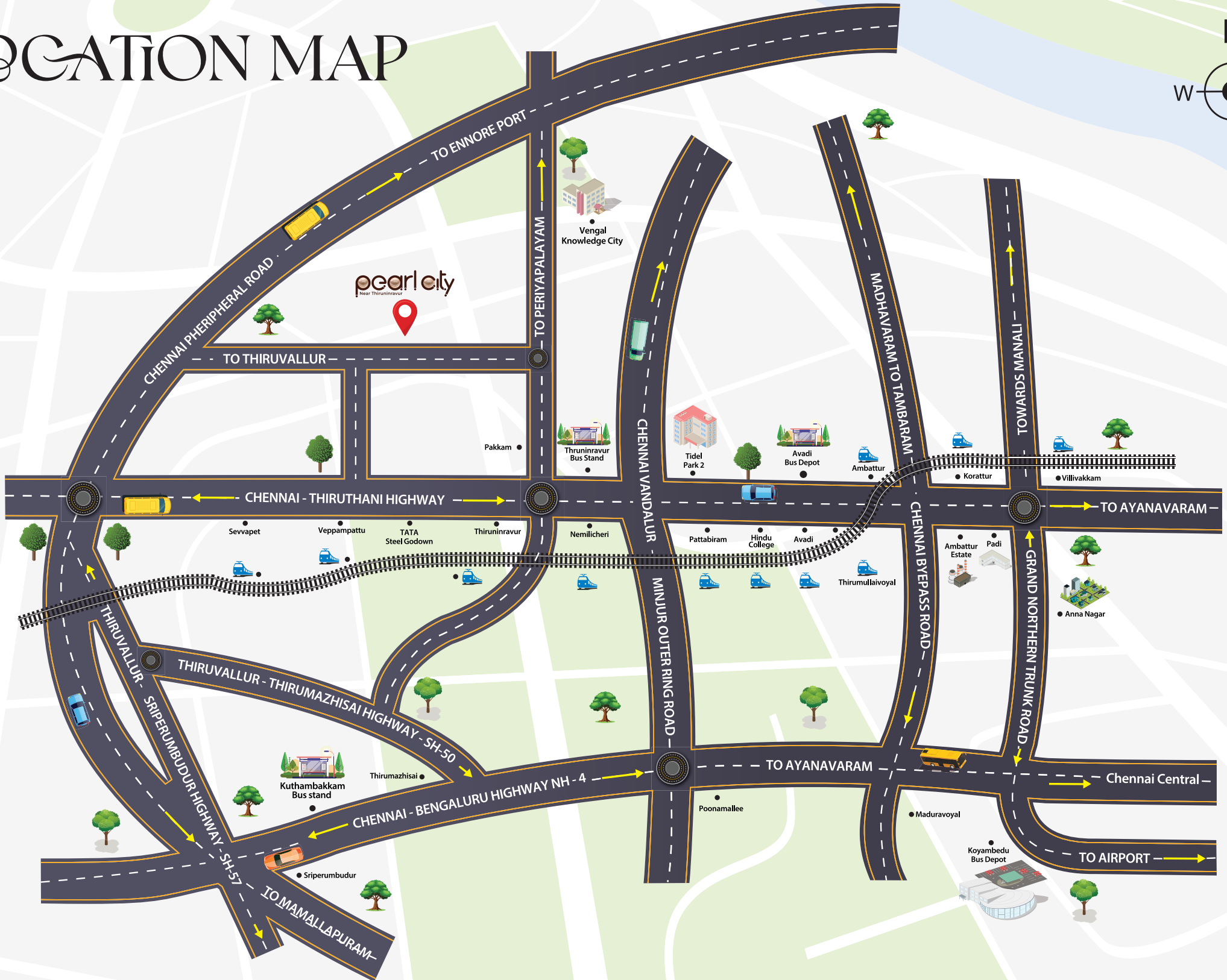


**Phase - I
KUTHAMBAKKAM**



**Phase - II
KUTHAMBAKKAM**

LOCATION MAP



ABOUT THE LOCATION

Thirunindravur, Melakondaiyur is well-connected to the city hub and offers excellent connectivity to all parts of Chennai by both road and train. The area boasts superior social infrastructure, including educational institutions, healthcare facilities, entertainment avenues, and key work hubs like New Tidel Park and Knowledge City. With access to the Chennai Peripheral Ring Road and Thirunindravur Railway Station, this location offers great potential for returns on investment due to ongoing social infrastructure developments. It is an ideal choice for both residential living and investment.

PROXIMITIES

SCHOOLS

- Govt. Higher Sec. School 500 meters
- Oxford Matriculation Hr. Sec. School 5 mins
- Jaya Public School 10 mins
- Angel Matriculation Hr. Sec. School 5 mins
- St. Claret Matriculation Hr. Sec. School 5 mins
- St. John's Matriculation Hr. Sec. School 5 mins
- Grace Park Convent School 8 mins
- Sri sai Vidya Mandir 10 mins
- GT Vidya Mandir 10 mins

COLLEGES

- Bajrang Engineering College 5 mins
- Jaya Engineering College 10 mins
- Hindu College 15 mins
- Jaya Suriya Engineering College 10 mins

- Amritha Vishwa Vidyapeetham 5 mins

HOSPITAL

- Parvathee hospital 5mins
- Sugam hospitals 24hrs 10mins
- AG Speciality Hospital 10mins
- MA Clinic 3mins
- Thiruninravur Govt. Hospital 10mins
- Abirami Hoospital 10mins
- Bethestha Hospital 10mins
- Aayur Siddha Healthcare hospital 5mins

CONNECTIVITY

- Periyapalayam Highway 2mins
- Chennai Peripheral Ring Road (CPRR) 5 mins
- Chennai – Thirupathi Highway 10 mins
- Outer Ring Road (ORR) 10 mins

HOME CLOSER TO EVERYTHING



Thirunindravur Railway station



Chennai peripheral ring road



Upcoming Pattabiram
Metro Station



New Tidal park phase 2



Upcoming Vengal
knowledge city



Tiruvallur Satellite
Township

NEWSPAPER ARTICLE CUTTING

7/27/24, 12:02 PM
Printed from
THE TIMES OF INDIA
Chennai port-Maduravoyal elevated express corridor will be a game-changer - Times of India

'Chennai port-Maduravoyal elevated express corridor will be a game-changer'

TNN | Oct 17, 2022, 04:00 AM IST

The 20.5km Chennai port-Maduravoyal elevated express corridor, expected to be ready by December 2024, will transform Chennai port into a hub for industries in Tamil Nadu, south Andhra Pradesh and eastern Karnataka, says Chennai Port Authority chairman and CMD of Kamarajar Port Limited (KPL) Sunil Pallival. In an interview to TOI, he also speaks about handling competition from Adani ports at Kattupalli and Krishnapattanam. Excerpts: What are the new initiatives of Chennai port and KPL at Ennore?

Both the ports are working in tandem after Chennai port acquired the Government of India's stakes in KPL in March 2020. While the immediate focus of Chennai port is improving connectivity, because it is in the heart of the city, capacity addition is key for KPL. A multi-modal logistics park (MMLP) will be developed at Mappedu near Sriperumbudur, a dry port, where the cargo would be assembled and transported to Chennai port by road or rail. And we are developing a rail yard at Jolarpet by December. At KPL, stage II of the container terminal with a quay length of 330 metres to handle 11.5 million tonnes per annum is coming up. Construction of roll-on/roll-off facility with general cargo berth including parking for 20,000 cars will be completed by August.

How will Ford's decision to cease production at its Chennai plant impact automobile exports through the two ports?

We are in talks with a leading car manufacturer on the outskirts of Bengaluru for exporting cars through KPL, which has the largest car park among 12 major ports in the country. This will almost compensate for the loss. What are the new avenues the two ports are looking at?

REPUBLIC

Published 19:21 IST, January 5th 2024

Tamil Nadu unveils plans for 1,703-acre knowledge city in Tiruvallur

Tamil Nadu Knowledge City (TKC), slated for development in Uthukottai taluk and Vengal village, promises to integrate global universities, and research centres.

Economy News • 1 min read
Reported by Business Desk


Follow | Share

City • Chennai

Tiruvallur satellite town to be a knowledge hub

According to sources, the knowledge city, a first of its kind in the state, would benefit around one lakh people.

Updated: 01st December 2023 06:58 AM | Last Updated: 03rd December 2023 06:58 AM



சென்னை பட்டாபிராமில் ஐடி பார்க் பணிகள் தீவிரம்!

tamil.samayam.com |

Thiruvallur Tidel Park

சென்னையில் ஏராளமான ஐடி நிறுவனங்கள் உள்ளன. மேலும் பல்வேறு ஸ்டார்ட்-அப் போன்ற நிறுவனங்களும் சமீப காலமாக அடியெடுத்து வைத்து வருகின்றனர். கூகுள் செய்திகள் பக்கத்தில் TimesXP Tamil இணையதளத்திற்கு செல்ல இங்கே கிளித் செய்யுங்கள். வீடியோ செய்திகளை உடனுக்குடன் பெறுங்கள்.

ஐடி கம்பெனிகள்

இவ்வாறு இருக்க தமிழக அரசு சார்பிலும் தைட்ஸ் பார்க் போன்ற பல்வேறு ஐடி கம்பெனிகள் செயல்படும் வகையில் அமைக்கப்பட்டு வருகிறது. இது தமிழகம் முழுவதும் பல்வேறு மாவட்டங்களில் அமைக்கப்பட்டு வெற்றிகரமாக செயல்பட்டு வருகிறது. வேளச்சேரி, கிண்டி போன்ற பகுதிகளில் ஏராளமான ஐடி நிறுவனங்கள் உள்ளன.



Collector, Tiruvallur @Tiruval... · 31m

Tiruvallur Bus Stand to come at a cost of 33 crores. #Tiruvallur

TN DIPR @TNDIPRNEWS · 4h

Municipal Administration and Water Supply Department - Construction of new bus stands with financial assistance from Infrastructure and Amenities Fund in Arcot, Idappadi, Ramanathapuram, Tiruvallur, Mettur, Chidambaram and Usilampatti Municipalities - 1/2

Show this thread

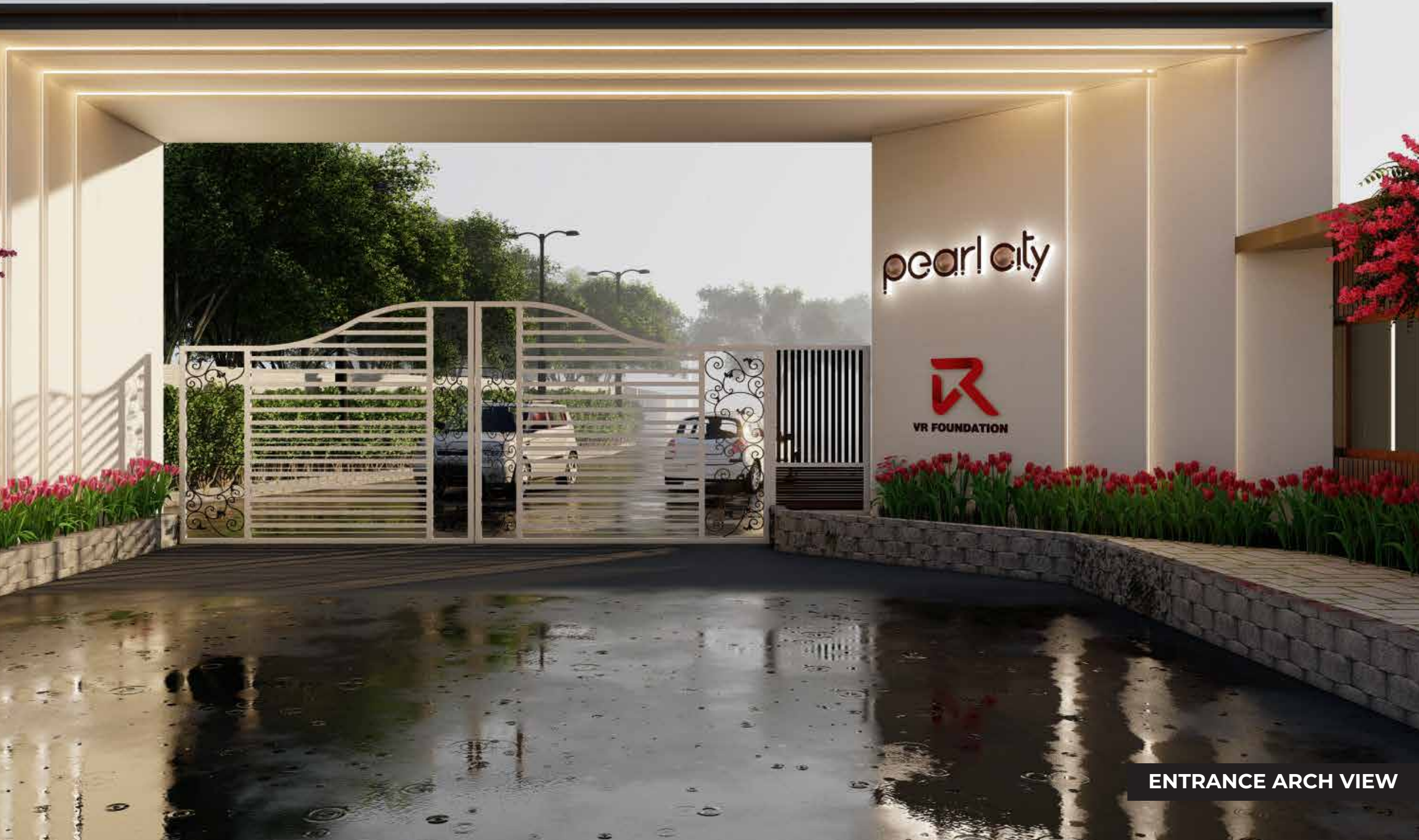


INVEST IN PEACE AND PROSPERITY AT VR PEARL CITY

Nestled in the peaceful embrace of Melakondaiyur Village, near Chennai, VR Pearl City invites you to discover a world of opportunity. Spread across 20 lush acres, this vibrant community offers 500 ready-to-build, DTCP and RERA-approved plots, giving you the perfect canvas to create your dream home or make a wise investment. With the safety of a secure compound wall and 24/7 security, you can rest easy knowing your space is protected. The tranquil setting allows you to enjoy the calm of village life, while still being close to the heart of Chennai, making it an ideal spot for both a peaceful retreat and a smart investment. Whether you're seeking a cosy home or a property with promising future growth, VR Pearl City provides the ideal foundation.

Whether you're looking for a quiet place to call home or a property that will grow in value, VR Pearl City is where you can build your future, your way.





pearl city



VR FOUNDATION

ENTRANCE ARCH VIEW

FULL SPREAD DAY VIEW
WITH LOCATION PINS

CHENNAI PERIPHERAL
RING ROAD (CPRR)



CHENNAI - THIRUVALLUR
HIGHWAY



KNOWLEDGE CITY - VENGAL

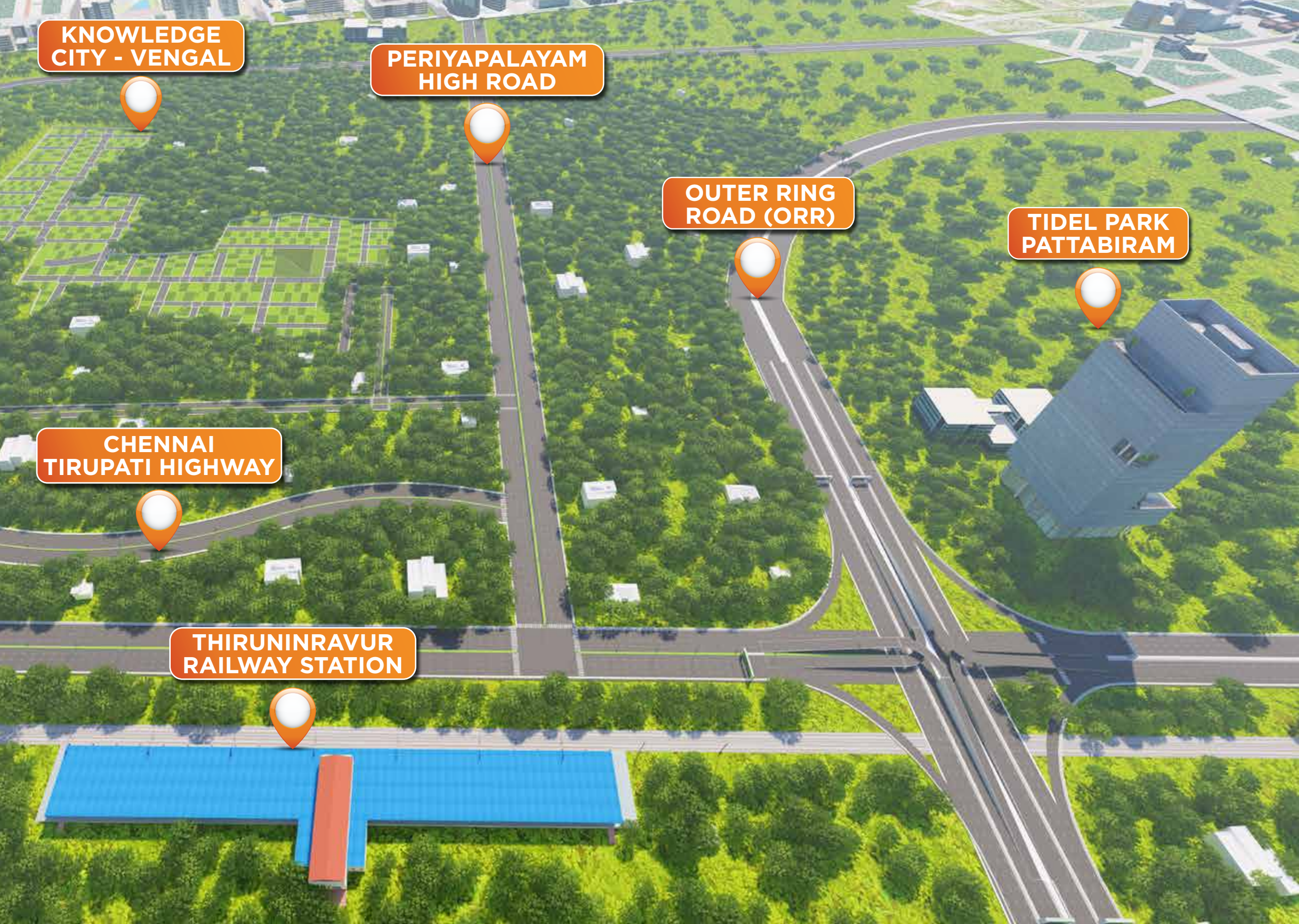
PERIYAPALAYAM HIGH ROAD

OUTER RING ROAD (ORR)

TIDEL PARK PATTABIRAM

CHENNAI TIRUPATI HIGHWAY

THIRUNINRAVUR RAILWAY STATION



CLUB HOUSE ELEVATION

CLUB HOUSE AMENITIES



Club House



Grand Entrance
Lounge



Library



Board Games



Table Tennis



Dart Board



Air Hockey



Foosball Table



Indoor Toddlers
Play Area



Gym



Yoga & Meditation



Multipurpose Hall

OUTDOOR AMENITIES



Jogging Track



Badminton Court



Children's Play area



Half Basket Ball court



Sitting Area



Acupressure walk way



Gazebo



Sand Pit



Outdoor Gym

PROJECT HIGHLIGHTS

FACILITIES



Clear
Title



DTCP & RERA
Approved



Blacktop
Roads



Street
Boards



Plot Numbering
Board



Paver
pathway



500+ Premium
Residential Plots



Street
lights



Sweet
groundwater



Landscaping



Fully Compounded
Community



Avenue
Plantation



Well-Developed
Park

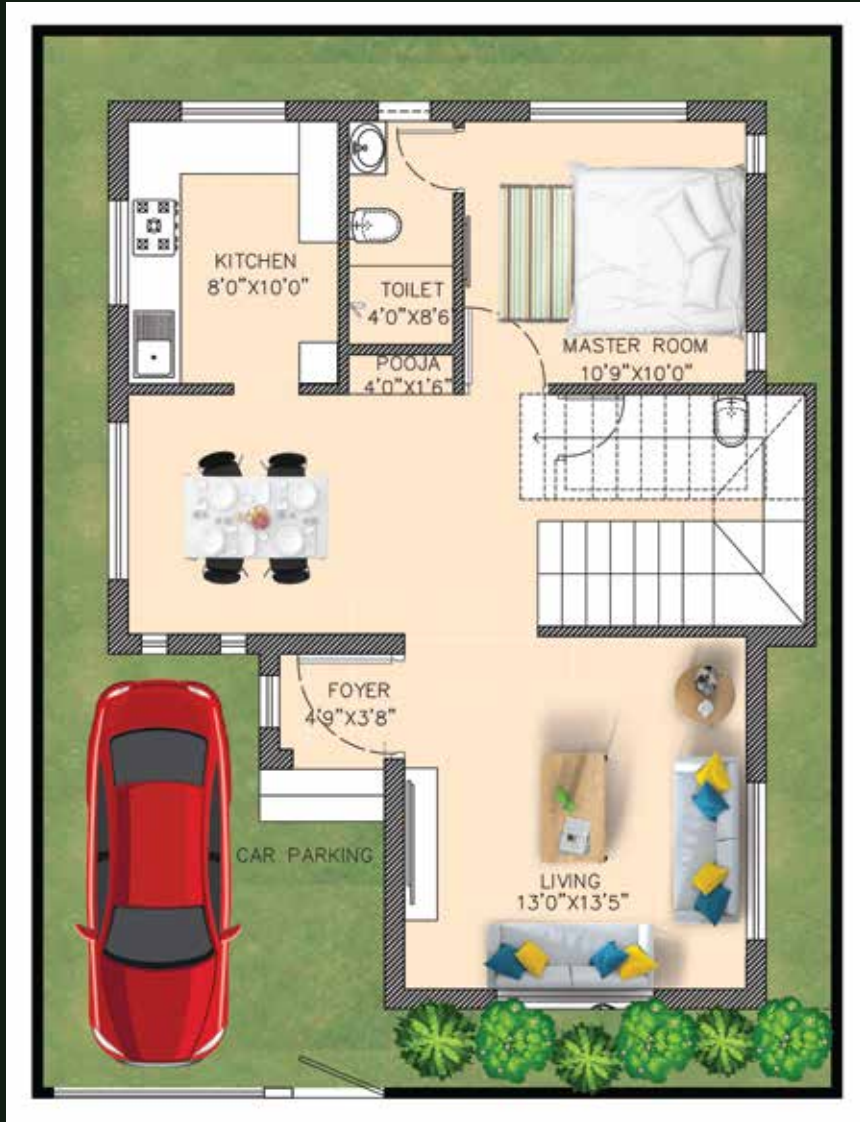


Tree
Court

VILLA ELEVATION



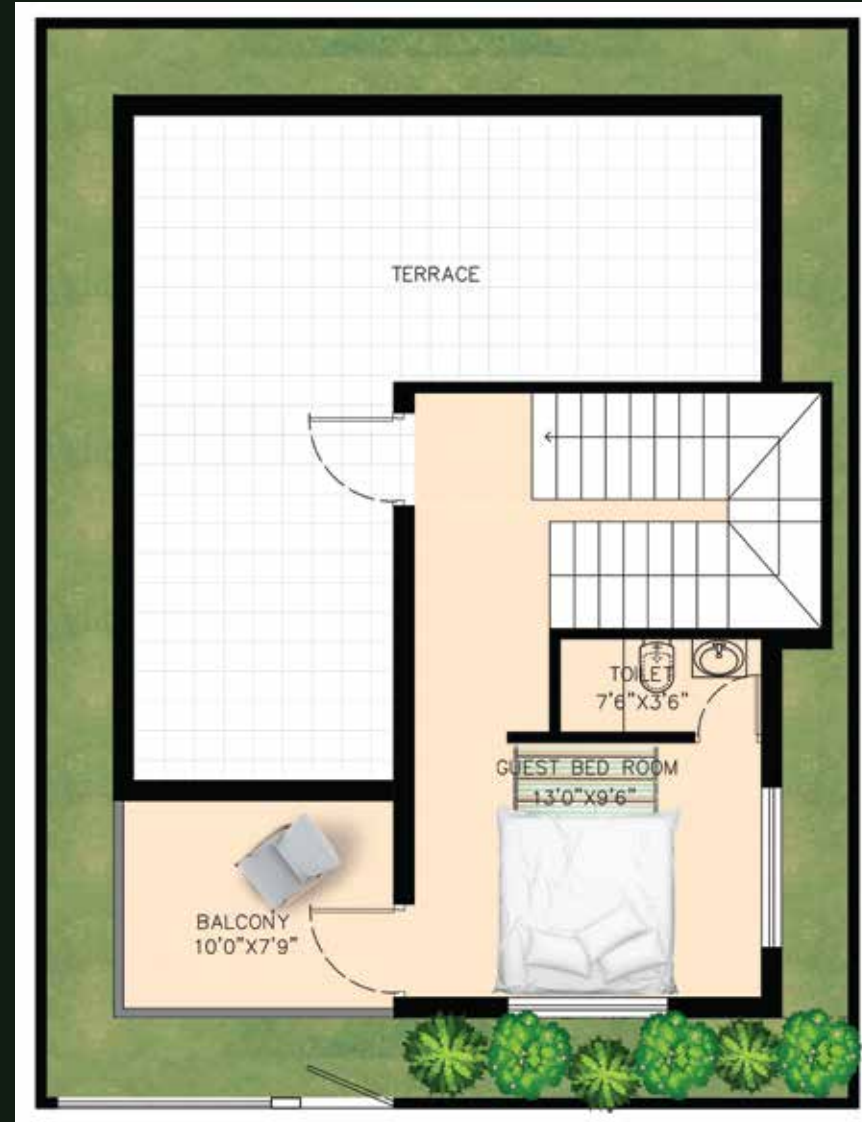
GROUND FLOOR



VILLA DETAILS

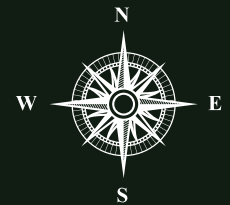
LAND AREA - 1200 sq.ft.

FIRST FLOOR



BUILT-UP AREA

Ground Floor - 754 sq.ft.
 First Floor - 455 sq.ft.
 Total Built-up Area - 1209 sq.ft.



WHY SHOULD INVEST IN PEARL CITY GROWTH CHART. THIRUNINDRAVUR, MALAKUNDAIYUR



**Join our community and
experience luxury living
at its best!**





No.93, Kundrathur High Road, Vigneshwara Nagar,
Porur, Chennai - 600116

+91 8678947894 | www.vrfoundations.in | sales@vrfoundations.in

Home Loans From



DISCLAIMER: This brochure is conceptual and not a legal offering. Visual representations such as layout plans, finishes, illustrations, pictures, photographs, and drawings herein are artist's representations.